



GOOD MORNING  
Have Good Trading Day

THURSDAY



Price is what you pay.  
Value is what you get.

- Warren Buffet



## MARKET PULSE

### INDIAN INDICES

NAME	CMP	NET CH.	%
SENSEX	26210	-2	-0.01
NIFTY	8034	+2	+0.02

### INDIAN ADR'S

SYMBOL	CLOSE	GAIN/ LOSS %
DRREDDY	44.81	+0.13
HDFCBANK	60.62	-0.67
ICICIBK	7.42	-1.07
INFY	14.73	-0.54
TATAMOTOR	33.48	-2.11
WIPRO	9.53	-0.83

### FII AND MF ACTIVITY

SYMBOL	In Crs.
FIIs Eq (Provisional)	-527.06
FIIs Index Future	1628.24
FIIs Index Options	284.75
FIIs Stock Future	819.03
FIIs Stock Options	178.25
DIIs Eq (Provisional)	824.84

### CURRENCY

RBI RATE	28-DEC-2016
RUPEE - \$	68.2250
EURO	71.4520
YEN 100	58.0600
GBP	83.8622

## MARKET PULSE

### GLOBAL INDICES

NAME	CMP	NET CH.	%
DOW	19833	-111	-0.56
NASDAQ	5438	-48	-0.89
NIKKEI	19214	-187	-0.97
HANG SENG	21688	-66	-0.31
SGX NIFTY	8010	-28	-0.35

### WORLD COMMODITIES

FUTURE	US\$	CHANGES
CRUDE	53.78	-0.28
NATURAL GAS	3.864	-0.034
GOLD	1148.1	+7.3
SILVER	16.155	+0.117
COPPER	2.5060	+0.0055

### WORLD EVENTS

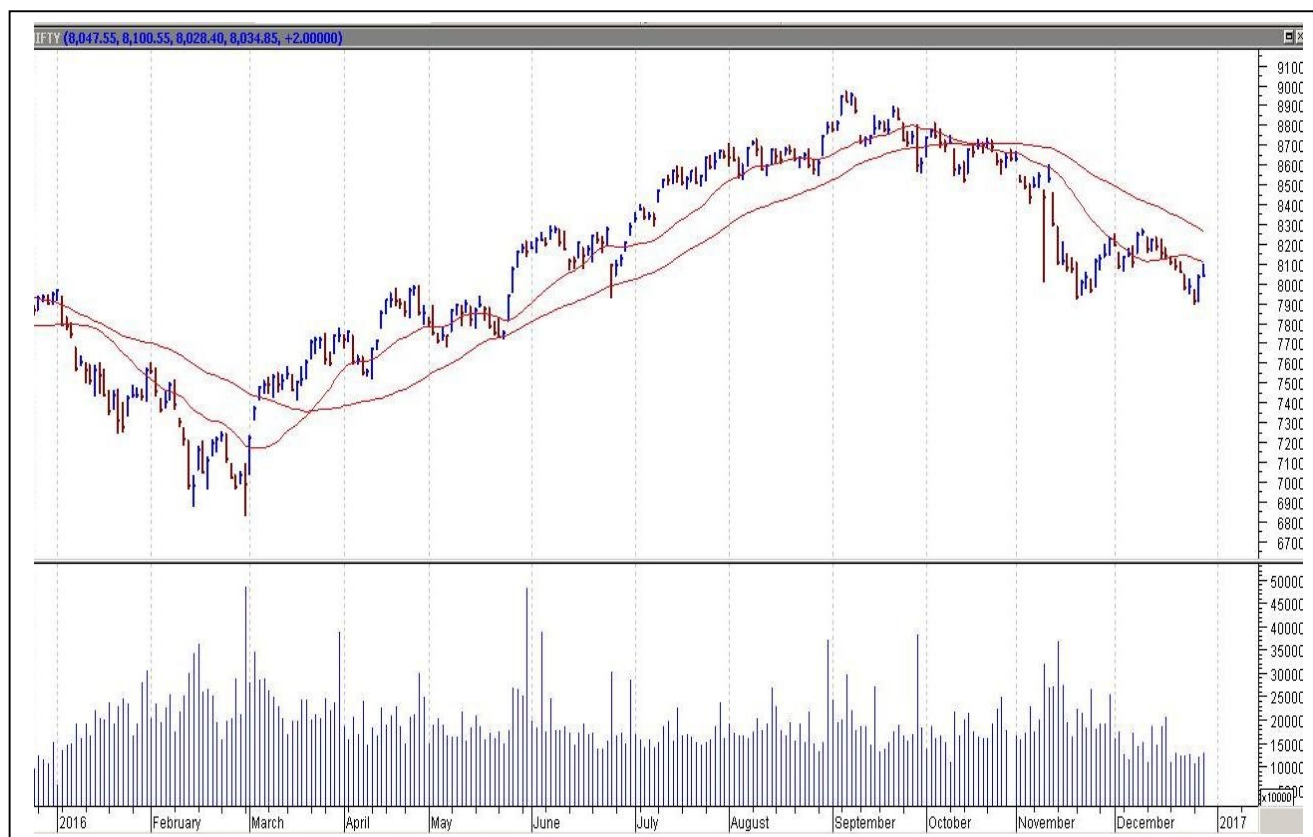
- US: Unemployment Claims
- Crude Oil Inventories
- UK: Nationwide HPI m/m

## TOP STORY

- NSE files draft IPO papers with SEBI. Existing NSE shareholders may offer 20-25 percent shares for estimated Rs 10,000 crore.
- Cadila Healthcare Zydus acquires 6 brands from MSD .
- JMC Projects bags orders in excess of Rs 1457 crore.
- IRB Infrastructure gets LoA from NHAI for project worth Rs 1530 crore.
- Sasta Sundar Ventures board meeting on January 5, 2017 to consider merger of certain subsidiaries
- Phoenix Mills acquired additional 8.72 percent stake in Island Star Developers
- TVS Motor Gets patent for hybrid transmission system.
- Sterlite Technologies Aims to more than double order book in 2017
- Tata Steel Seeks foreign investment for Odisha SEZ Project



## NIFTY CHART



## MARKET COMMENTARY

Indian equity benchmarks traded in green throughout the session but ended on a flat note ahead of the expiry of December series F&O contracts. However, the firm trade prevailed for most part of the day but last hour of trade dragged the benchmarks near neutral line. Oil prices extended strong overnight gains amid thinning pre-New Year holiday trade, less than a week before major global oil producers begin to scale back production in line with the deal they struck last month. Back home, the markets traded in fine fettle in early deals tracking positive trend seen in Asian markets and as US was up supported by upbeat consumer and housing data. For today's trade Nifty likely to trade in the range between 8045 – 8055 in the upper side and 8015 – 7995 in the lower side.

### MARKET LEVELS

	CMP	SUPPORT LEVELS				RESISTANCE LEVELS			
NIFTY	8034	8015	7995	7985	7965	8045	8055	8075	8095
USDINR	68.38	68.3	68.2	68.1	68	68.45	68.55	68.65	68.75



#### BULK DEALS (BSE)

SCRIP	CLIENT NAME	BUY/SELL	QUANTITY	PRICE
VEDAVAAG	SRINIVASA MURTHY JONNAVITHULA	S	100,000	60.95
RDEL	MORGAN STANLEY MAURITIUS COMPANY LIMITED	B	12,322,863	54.15
RDEL	VALIANT MAURITIUS PARTNERS OFFSHORE LIMITED	S	6,878,223	54.15

#### BULK DEALS (NSE)

SCRIP	CLIENT NAME	BUY/SELL	QUANTITY	PRICE
VIVIMEDLAB	KITARA PIIN 1101	BUY	1219300	89.47
VIVIMEDLAB	KOTAK MAHINDRA (INTERNATIONAL) LIMITED	SELL	1219300	89.47
MERCATOR	KITARA PIIN 1101	BUY	8159363	40.9
MERCATOR	KOTAK MAHINDRA (INTERNATIONAL) LIMITED	SELL	8159363	40.9

#### SCRIP'S IN F&O BAN

(To resume for normal trading below 80% of market wide limit required)

CEATLTD,IBREALEST, WOOCKPHARMA,ORIENTBANK

#### Initial Public Offering (IPO)

Company Name	Security type	Issue Start Date	Issue End Date	Status
NIL				



NIFTY 50 STOCKS: SUPPORT & RESISTANCE						
Symbol	Close	Support 1	Support 2	Pivot Point	Resistance1	Resistance2
ACC	1295	1284	1273	1294	1305	1316
ADANIPORTS	269	266	264	269	271	274
AMBUJACEM	201	200	198	202	204	206
ASIANPAINT	876	867	858	878	887	899
AXISBANK	440	436	432	442	446	452
BAJAJ-AUTO	2633	2620	2606	2637	2650	2668
BANKBARODA	150	149	147	151	152	154
BHARTIARTL	300	297	294	300	303	306
BHEL	119	119	118	120	121	122
BOSCHLTD	20172	19926	19680	20206	20452	20732
BPCL	615	611	606	615	620	624
CAIRN	238	236	234	240	242	246
CIPLA	562	558	554	565	569	576
COALINDIA	295	290	286	293	298	301
DRREDDY	3070	3034	2999	3073	3108	3147
GAIL	425	420	416	424	428	431
GRASIM	811	801	791	816	826	840
HCLTECH	807	802	796	810	815	823
HDFC	1238	1225	1211	1236	1250	1261
HDFCBANK	1187	1180	1174	1188	1194	1202
HEROMOTOCO	3002	2982	2962	3016	3036	3070
HINDALCO	154	151	149	155	157	160
HINDUNILVR	810	804	797	813	819	828
ICICIBANK	252	250	249	253	254	256
IDEA	71	70	69	71	72	73
INDUSINDBK	1082	1062	1042	1080	1100	1118
INFY	999	992	986	1001	1007	1016
ITC	235	233	231	235	237	239
KOTAKBANK	713	708	704	714	718	723
LT	1350	1343	1336	1353	1360	1370
LUPIN	1454	1445	1435	1457	1466	1478
M&M	1174	1168	1161	1176	1183	1191
MARUTI	5231	5208	5184	5243	5266	5301
NTPC	161	160	159	161	162	163
ONGC	190	189	188	190	192	193
PNB	114	113	111	115	116	119
POWERGRID	180	178	177	181	182	185
RELIANCE	1050	1041	1033	1055	1064	1078
SBIN	248	246	244	249	251	254
SUNPHARMA	621	617	613	623	627	633
TATAMOTORS	463	461	458	465	467	471
TATAMTRDVR	291	289	287	293	295	299
TATAPOWER	74	73	73	74	75	75
TATASTEEL	388	385	382	390	393	397
TCS	2313	2294	2275	2322	2341	2369
TECHM	474	470	465	473	478	481
ULTRACEMCO	3160	3124	3089	3162	3197	3235
VEDL	212	209	207	213	216	220
WIPRO	469	464	460	470	475	480
YESBANK	1113	1103	1092	1121	1131	1149
ZEEL	443	437	431	443	449	454



## CORPORATE ACTION / BOARD MEETINGS

NSE Download Ref No. : NSE/SURV/33823:- TCI Express Limited (TCIEXP) shall be transferred from trade for trade segment (series: BE) to rolling segment (series: EQ) with effect from December 29, 2016 (Thursday)

NSE Download Ref No. : NSE/CML/33865:- Face Value Split-JSW Steel Limited from Rs. 10 to Rs. 1  
w.e.f January 04, 2017

NSE Download Ref No :NSE/FAOP/33866:- Adjustment of Futures and Options contracts in the security JSWSTEEL. The adjusted strike price shall be arrived at by dividing the old strike price by the adjustment factor i.e. 10. The revised market lot would be 3000 w.e.f January 04, 2017

## BOARD MEETINGS

[illegible]

## NEWS & RUMOURS:

- Gold (Spot Dollar) major support = \$1116/\$1076 & Resistance = \$1168/\$1197.
- Crude oil range->\$48 to \$58.
- U.S. Stocks Slip as Dollar Raises, Oil Pares Gain: Markets Wrap: - U.S. stocks retreated from near records in light holiday trading, with the Dow Jones Industrial Average failing anew in its quest for 20,000. Oil hovered near \$54 a barrel and the dollar traded at its strongest level in more than a decade.
- Dollar extends March higher with 14-year peak in sight: - The U.S. dollar continued its march higher against the other major currencies in light pre-New Year holiday trade on Wednesday, as expectations for strong economic growth under Donald Trump's Administration and more rate hikes by Federal Reserve next year continued to lend support.
- Oil prices near 17-month peak ahead of planned supply cuts: - Oil prices extended [strong overnight gains](#) amid thinning pre-New Year holiday trade on Wednesday, less than a week before major global oil producers begin to scale back production in line with the deal they struck last month.
- U.S. natural gas edges lower amid year-end profit-taking:- U.S. natural gas futures edged lower in light pre-New Year holiday trade on Wednesday, as market players took profits on a recent rally which took prices to near a two-year peak. Trading volumes are expected to remain light this week due to the holiday period as many investors already closed books before the end of the year, reducing liquidity in the market, which could exaggerate market moves.

## TRENDS & OUTLOOK – DATE: 29-Dec-2016

### PRECIOUS METALS:

COMMDITY (MCX)	S2	S1	PIVOT POINT	R1	R2
GOLD (Feb)	26800	27027	27275	27597	27970
SILVER (Mar)	37200	38140	39400	40755	41900

### BASE METALS

COMMDITY (MCX)	S2	S1	PIVOT POINT	R1	R2
COPPER (Feb)	366	372	378	385	392
ZINC (Dec)	168.30	171.45	174.55	178.45	182.55
LEAD (Dec)	131.20	135.25	138.75	143.55	146.95
NICKEL (Dec)	651	666	693	715	734

### ENERGY

COMMDITY (MCX)	S2	S1	PIVOT POINT	R1	R2
CRUDE OIL (Jan)	3454	3560	3690	3830	3940
NATURAL GAS (Jan)	243	250	255	261	267

### DATA TALKS : TODAY'S ECONOMIC DATA :

Unemployment Claims, Goods Trade Balance, Prelim Wholesale Inventories m/m, Natural Gas Storage, Crude Oil Inventories.



LET THE  
WOMAN  
POWER RISE

## WOMEN DESK

All the Ladies in the house are  
cordially invited to come  
& explore their trading talents.

**TOLL FREE: 18001030059**



Registered Office

Indira House, 3rd Floor, 5 Topiwala Lane,  
Opp. Lemington Road Police Station, Grant Road (East), Mumbai - 400007.

Corporate Office

'Ramavat House' E-15, Saket Nagar, Indore - 452018 (M.P.)

Customer Care

Tel: +91-731-4097170/ 71/ 72/ 73/ 74 M. +91 93031 72345

Email: [customercare@indiratrade.com](mailto:customercare@indiratrade.com) [www.indiratrade.com](http://www.indiratrade.com)



INSTITUTIONAL DEALING UNIT

Africa House, 5, Topiwalla Lane, Lamington Road, Mumbai, 400007

Tel: +91 22 30080678 Fax : +91 22 23870767 Email : [ie@indiratrade.com](mailto:ie@indiratrade.com)

**Disclaimer**

This report is for private circulation within the Indira Group. This report is strictly confidential and for information of the selected recipient only and may not be altered in any way, transmitted to, copied or distributed, in part or in whole, to any other person or to the media or reproduced in any form. This report should not be construed as an offer or solicitation to buy or sell any securities or any interest in securities. It does not constitute a personal recommendation or take into account the particular investment objectives, financial situations, or any such factor. The information, opinions estimates and forecasts contained here have been obtained from, or are based upon, sources we believe to be reliable, but no representation of warranty, express or implied, is made by us to their accuracy or completeness. Opinions expressed are our current opinions as of the date appearing on this material only and are subject to change without notice.